

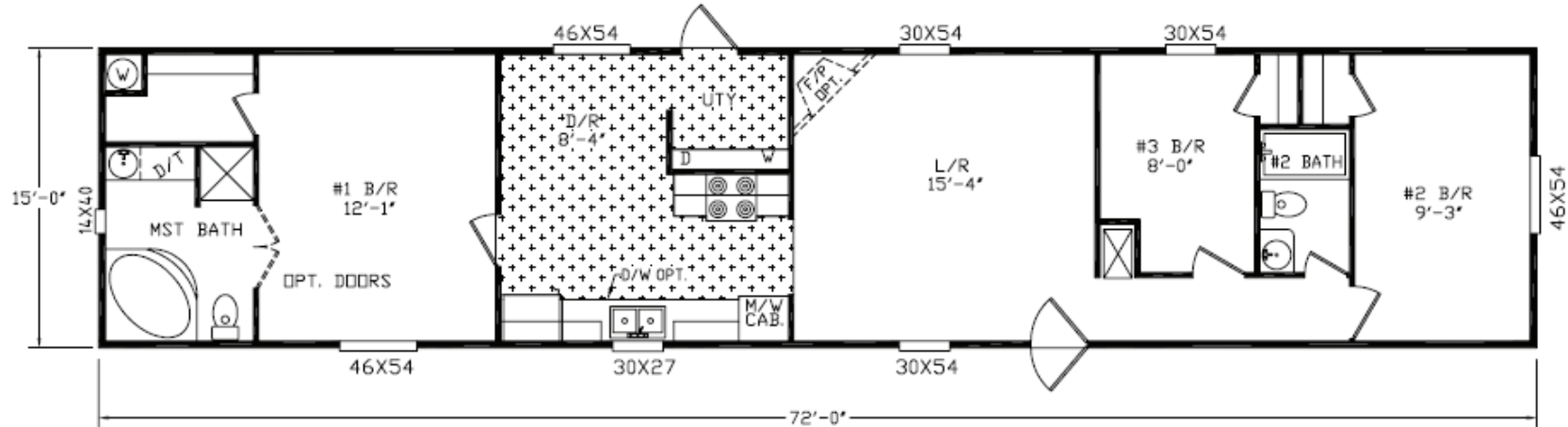


river birch
HOMES

model 1013

76 X 16 | 3 bedrooms | 2 bath | 1080 square feet

Quality, Value, and Service.



STANDARD FEATURES

CONSTRUCTION

12" Steel I-Beam Chassis
 Full Length Outriggers
 2 x 4 Exterior Walls 16" o.c.
 2 x 6 Floor Joist 16" o.c.
 Drywall Construction
 Truss Type Rafters
 Zone One Insulation
 Vaulted Ceiling Throughout
 Sprayed Acoustic Ceilings
 5/8" Subfloor

INTERIOR

Valances Throughout
 Mini Blinds Throughout
 Brushed Nickel Door Knobs
 Wrapped Molding
 Wrapped Door Jamb
 30" Bedroom Doors

EXTERIOR

Mini Gutters Along Roof
 Starter Metal - Entire Home
 Mill-finished Windows
 Exterior Light at Each Ext Door
 House-type Front Door with Storm

BATH

Glamour Bath (Most Models)
 Dressing Table in Master Bath
 Framed Mirror in all Baths (Most Models)

KITCHEN

Deep Stainless Steel Dbl Bowl Sink
 Decor. Molding on Kitchen Cabinets
 Center Shelves in all O/H Cabinets
 Base Shelf in all Cabinets
 White Lined Cabinets
 Metal Roller Guides
 Recessed Toe Kick
 30" Overhead Cabinets

Pantry in Kitchen (Most Models)
 Electric Range
 42" Recessed Range Hood
 Whirlpool Appliances
 Raised Panel Cabinet Doors
 Recessed Hinges on Cabinet Doors
 Brushed Nickel Cabinet Pulls

ELECTRICAL/PLUMBING

200 Amp Service
 Smoke Detectors
 100% Cooper Wiring
 GFI Protected Receptacles in all Baths
 GFI Protected Receptacles at Kit Sink
 GFI Protected Exterior Receptacle
 Exhaust Fan in all Baths
 Electric Furnace - A/C Ready
 30 Gallon Water Heater
 PVC Drain Lines
 Pex Plumbing System

For more information, please contact us:



400 river birch drive
 hackleburg, al 35564

tf 888 426 5622
 tel 205 935 1997

POPULAR OPTIONS

Thermal Zone II or III
 Ceiling Fan
 Wainscot in Living Room
 Microwave Oven

Upgrade Carpet
 Fireplace
 Dishwasher
 Storm Windows

Steel Front Doors
 Cut-Off Valves
 Plywood Floors
 Backsplash in Kitchen

River Birch Homes, Inc. reserves the right to change colors, prices, specifications, models, dimensions and materials without notice. Rendering and diagrams are meant to be representative and, in keeping with River Birch's policy of updating and improvement, may vary from the actual home. All dimensions are nominal and approximated. Square footage is measured from exterior wall to exterior wall, and is an approximate figure. Length and width indicated on floorplan is floor size. Size indicated at model number is transportation size.