

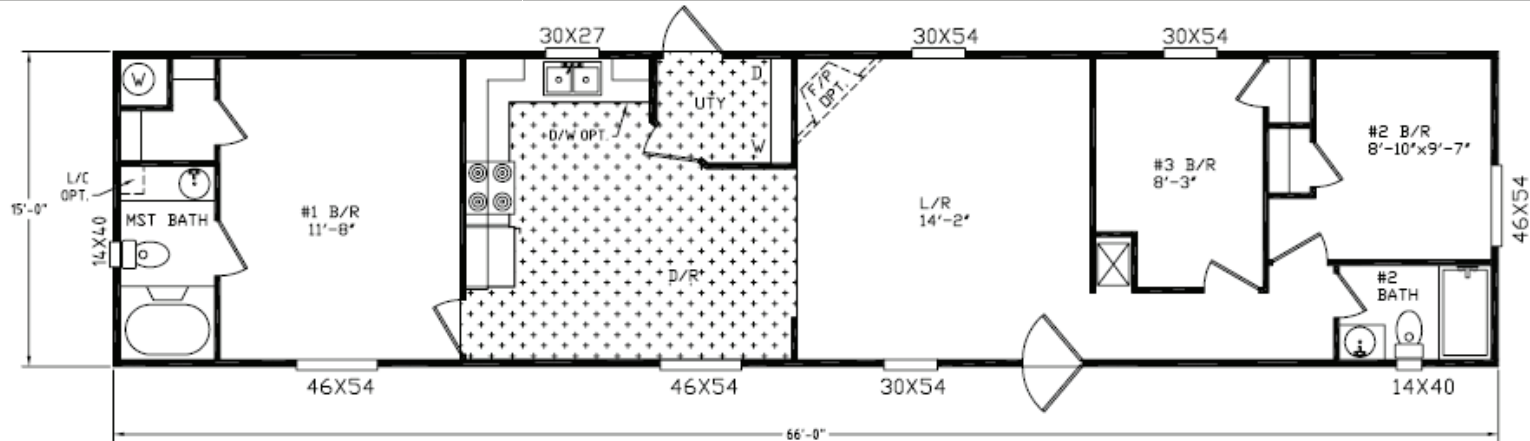


**river birch**  
HOMES

**model 1030**

70 X 16 | 3 bedrooms | 2 bath | 990 square feet

Quality, Value, and Service.



**STANDARD FEATURES**

**CONSTRUCTION**

12" Steel I-Beam Chassis  
Full Length Outriggers  
2 x 4 Exterior Walls 16" o.c.  
2 x 6 Floor Joist 16" o.c.  
Drywall Construction  
Truss Type Rafters  
Zone One Insulation  
Vaulted Ceiling Throughout  
Sprayed Acoustic Ceilings  
5/8" Subfloor

**INTERIOR**

Valances Throughout  
Mini Blinds Throughout  
Brushed Nickel Door Knobs  
Wrapped Molding  
Wrapped Door Jambs  
30" Bedroom Doors

**EXTERIOR**

Mini Gutters Along Roof  
Starter Metal - Entire Home  
Mill-finished Windows  
Exterior Light at Each Ext Door  
House-type Front Door with Storm

**BATH**

Glamour Bath (Most Models)  
Dressing Table in Master Bath (Most Models)  
Framed Mirror in all Baths (Most Models)

**KITCHEN**

Deep Stainless Steel Dbl Bowl Sink  
Decor. Molding on Kitchen Cabinets  
Center Shelves in all O/H Cabinets  
Base Shelf in all Cabinets  
White Lined Cabinets  
Metal Roller Guides  
Recessed Toe Kick  
30" Overhead Cabinets

Pantry in Kitchen (Most Models)  
Electric Range  
42" Recessed Range Hood  
Whirlpool Appliances  
Raised Panel Cabinet Doors  
Recessed Hinges on Cabinet Doors  
Brushed Nickel Cabinet Pulls

**ELECTRICAL/PLUMBING**

200 Amp Service  
Smoke Detectors  
100% Cooper Wiring  
GFI Protected Receptacles in all Baths  
GFI Protected Receptacles at Kit Sink  
GFI Protected Exterior Receptacle  
Exhaust Fan in all Baths  
Electric Furnace - A/C Ready  
30 Gallon Water Heater  
PVC Drain Lines  
Plumbing System

For more information, please contact us:



400 river birch drive  
hackleburg, al 35564

tf 888 426 5622  
tel 205 935 1997

**POPULAR OPTIONS**

Thermal Zone II or III  
Ceiling Fan  
Wainscot in Living Room  
Microwave Oven

Upgrade Carpet  
Fireplace  
Dishwasher  
Storm Windows

Steel Front Doors  
Cut-Off Valves  
Plywood Floors  
Backsplash in Kitchen

River Birch Homes, Inc. reserves the right to change colors, prices, specifications, models, dimensions and materials without notice. Rendering and diagrams are meant to be representative and, in keeping with River Birch's policy of updating and improvement, may vary from the actual home. All dimensions are nominal and approximated. Square footage is measured from exterior wall to exterior wall, and is an approximate figure. Length and width indicated on floorplan is floor size. Size indicated at model number is transportation size.