

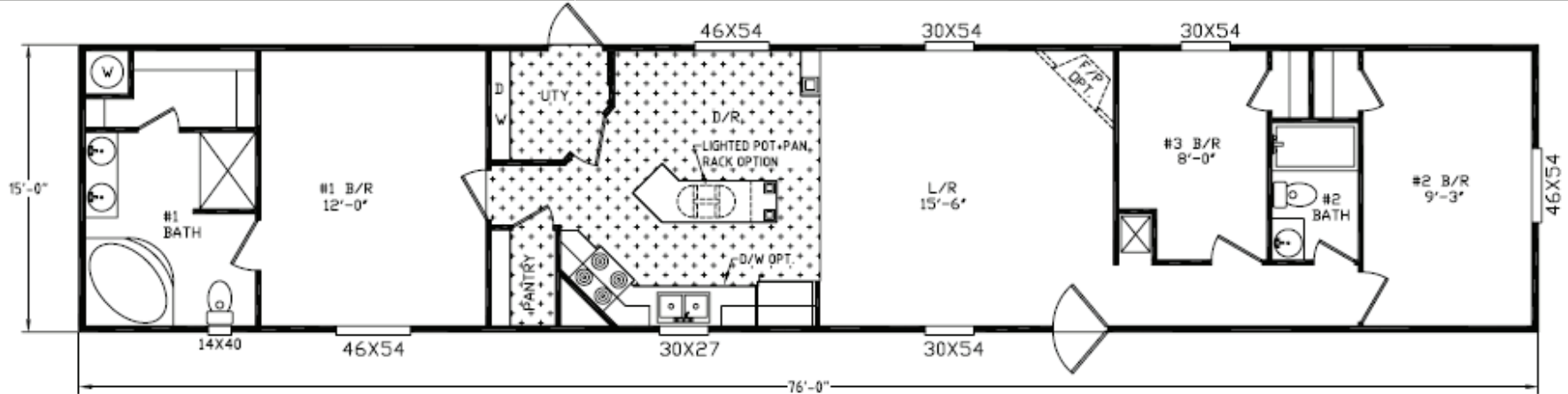


river birch
HOMES

model 1040

80 X 16 | 3 bedrooms | 2 bath | 1140 square feet

Quality, Value, and Service.



STANDARD FEATURES

CONSTRUCTION

- 12" Steel I-Beam Chassis
- Full Length Outriggers
- 2 x 4 Exterior Walls 16" o.c.
- 2 x 6 Floor Joist 16" o.c.
- Drywall Construction
- Truss Type Rafters
- Zone One Insulation
- Vaulted Ceiling Throughout
- Sprayed Acoustic Ceilings
- 5/8" Subfloor

INTERIOR

- Valances Throughout
- Mini Blinds Throughout
- Brushed Nickel Door Knobs
- Wrapped Molding
- Wrapped Door Jambs
- 30" Bedroom Doors

EXTERIOR

- Mini Gutters Along Roof
- Starter Metal - Entire Home
- Mill-finished Windows
- Exterior Light at Each Ext Door
- House-type Front Door with Storm

BATH

- Glamour Bath (Most Models)
- Dressing Table in Master Bath (Most Models)
- Framed Mirror in all Baths (Most Models)

KITCHEN

- Deep Stainless Steel Dbl Bowl Sink
- Decor. Molding on Kitchen Cabinets
- Center Shelves in all O/H Cabinets
- Base Shelf in all Cabinets
- White Lined Cabinets
- Metal Roller Guides
- Recessed Toe Kick
- 30" Overhead Cabinets

- Pantry in Kitchen (Most Models)
- Electric Range
- 42" Recessed Range Hood
- Whirlpool Appliances
- Raised Panel Cabinet Doors
- Recessed Hinges on Cabinet Doors
- Brushed Nickel Cabinet Pulls

ELECTRICAL/PLUMBING

- 200 Amp Service
- Smoke Detectors
- 100% Cooper Wiring
- GFI Protected Receptacles in all Baths
- GFI Protected Receptacles at Kit Sink
- GFI Protected Exterior Receptacle
- Exhaust Fan in all Baths
- Electric Furnace - A/C Ready
- 30 Gallon Water Heater
- PVC Drain Lines
- Pex Plumbing System

For more information, please contact us:



400 river birch drive
hackleburg, al 35564

tf 888 426 5622
tel 205 935 1997

POPULAR OPTIONS

- | | | |
|-------------------------|----------------|-----------------------|
| Thermal Zone II or III | Upgrade Carpet | Steel Front Doors |
| Ceiling Fan | Fireplace | Cut-Off Valves |
| Wainscot in Living Room | Dishwasher | Plywood Floors |
| Microwave Oven | Storm Windows | Backsplash in Kitchen |

River Birch Homes, Inc. reserves the right to change colors, prices, specifications, models, dimensions and materials without notice. Rendering and diagrams are meant to be representative and, in keeping with River Birch's policy of updating and improvement, may vary from the actual home. All dimensions are nominal and approximated. Square footage is measured from exterior wall to exterior wall, and is an approximate figure. Length and width indicated on floorplan is floor size. Size indicated at model number is transportation size.