

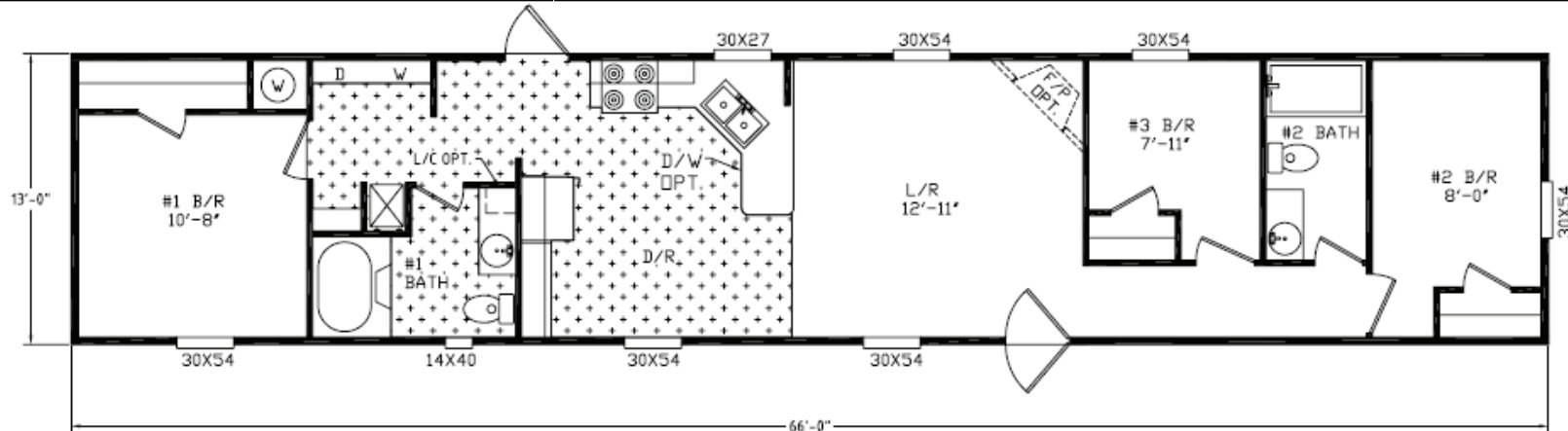


river birch
HOMES

model 1408

70 X 14 | 3 bedrooms | 2 bath | 858 square feet

Quality, Value, and Service.



STANDARD FEATURES

CONSTRUCTION

12" Steel I-Beam Chassis
Full Length Outriggers
2 x 4 Exterior Walls 16" o.c.
2 x 6 Floor Joist 16" o.c.
Drywall Construction
Truss Type Rafters
Zone One Insulation
Vaulted Ceiling Throughout
Sprayed Acoustic Ceilings
5/8" Subfloor

INTERIOR

Valances Throughout
Mini Blinds Throughout
Brushed Nickel Door Knobs
Wrapped Molding
Wrapped Door Jambs
30" Bedroom Doors

EXTERIOR

Mini Gutters Along Roof
Starter Metal - Entire Home
Mill-finished Windows
Exterior Light at Each Ext Door
House-type Front Door with Storm

BATH

Glamour Bath (Most Models)
Dressing Table in Master Bath (Most Models)
Framed Mirror in all Baths (Most Models)

KITCHEN

Deep Stainless Steel Dbl Bowl Sink
Decor. Molding on Kitchen Cabinets
Center Shelves in all O/H Cabinets
Base Shelf in all Cabinets
White Lined Cabinets
Metal Roller Guides
Recessed Toe Kick
30" Overhead Cabinets

Pantry in Kitchen (Most Models)
Electric Range
42" Recessed Range Hood
Whirlpool Appliances
Raised Panel Cabinet Doors
Recessed Hinges on Cabinet Doors
Brushed Nickel Cabinet Pulls

ELECTRICAL/PLUMBING

200 Amp Service
Smoke Detectors
100% Cooper Wiring
GFI Protected Receptacles in all Baths
GFI Protected Receptacles at Kit Sink
GFI Protected Exterior Receptacle
Exhaust Fan in all Baths
Electric Furnace - A/C Ready
30 Gallon Water Heater
PVC Drain Lines
Pex Plumbing System

For more information, please contact us:



400 river birch drive
hackleburg, al 35564

tf 888 426 5622
tel 205 935 1997

POPULAR OPTIONS

Thermal Zone II or III
Ceiling Fan
Wainscot in Living Room
Microwave Oven

Upgrade Carpet
Fireplace
Dishwasher
Storm Windows

Steel Front Doors
Cut-Off Valves
Plywood Floors
Backsplash in Kitchen

River Birch Homes, Inc. reserves the right to change colors, prices, specifications, models, dimensions and materials without notice. Rendering and diagrams are meant to be representative and, in keeping with River Birch's policy of updating and improvement, may vary from the actual home. All dimensions are nominal and approximated. Square footage is measured from exterior wall to exterior wall, and is an approximate figure. Length and width indicated on floorplan is floor size. Size indicated at model number is transportation size.