



**river birch**  
HOMES

**model 3006**

60 X 32 | 4 bedrooms | 2 baths | 1680 square feet

**Quality, Value, and Service.**

**STANDARD FEATURES**

**CONSTRUCTION**

Detachable Hitches  
Steel I-Beam Chassis  
Full Length Outriggers  
2 X 4 Exterior Walls 16" o.c.  
2 X 6 Floor Joists 16" o.c.  
Drywall Construction  
Truss-type Rafters  
Zone One Insulation  
Vaulted Ceiling Throughout  
Sprayed Acoustic Ceilings  
5/8" Subfloor

**EXTERIOR**

Vinyl Siding  
Shingle Roof  
White Receiver Windows  
Exterior Light at Each Exterior Door  
House-type Front Door with Storm

**INTERIOR**

Full Length Drapes in Living Room  
Mini Blinds Throughout  
Brushed Nickel Door Knobs Throughout  
Wrapped Molding  
Wrapped Door Jambs  
30" Bedroom Doors

**BATH**

Glamour Master Bath  
48" Shower Stall Master Bath  
Framed Mirror in all Baths  
Double Lavs in Master Baths (Most Models)  
Ceramic Toilets

**KITCHEN**

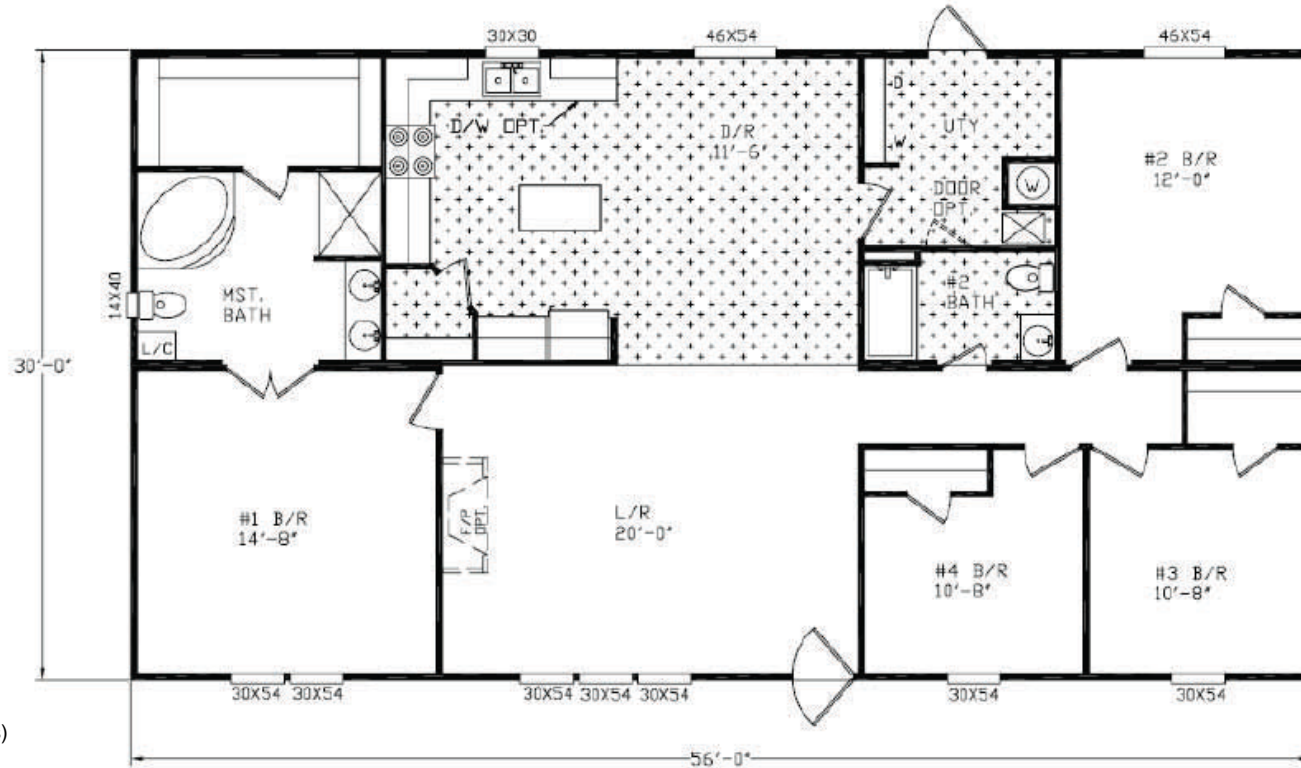
Deep Stainless Steel Double Bowl Sink  
Decorative Glass (Most Models)  
Center Shelves in all O/H Cabinets  
Base Shelf in all Cabinets  
White Lined Cabinets  
Metal Roller Guides  
Recessed Toe Kick  
Pantry in Kitchen (Most Models)  
Electric Range

42" Recessed Range Hood  
Whirlpool Appliances  
Raised Panel Cabinet Door  
Recessed Hinges on Cabinet Doors  
Brushed Nickel Cabinet Pulls  
30" Overhead Cabinets

**ELECTRICAL/PLUMBING**

200 Amp Service  
Smoke Detectors  
100% Copper Wiring  
GFI Protected Receptacles at Kitchen Sink  
GFI Protected Exterior Receptacle  
Exhaust Fan in all Baths  
Electric Furnace  
30 Gallon Water Heater

PVC Drain Lines  
Pex Plumbing System



**POPULAR OPTIONS**

Dishwasher  
Thermal Zone II or III  
Ceiling Fan  
20' Stainless Steel Refrigerator  
Microwave Oven

Upgrade Carpet  
Wainscot  
Storm Windows  
Linen Cabinet  
Plywood Floors

Fireplace  
Steel Front Door  
Deluxe Range  
Icemaker  
Skylights

For more information, please contact us:



400 river birch drive  
hackleburg, al 35564

tf 888 426 5622  
tel 205 935 1997

River Birch Homes, Inc. reserves the right to change colors, prices, specifications, models, dimensions and materials without notice. Rendering and diagrams are meant to be representative and, in keeping with River Birch's policy of updating and improvement, may vary from the actual home. All dimensions are nominal and approximated. Square footage is measured from exterior wall to exterior wall, and is an approximate figure. Length and width indicated on floorplan is floor size. Size indicated at model number is transportation size.