



river birch
HOMES

model 3018

64 X 32 | 3 bedrooms | 2 baths | 1800 square feet

Quality, Value, and Service.

STANDARD FEATURES

CONSTRUCTION

Detachable Hitches
Steel I-Beam Chassis
Full Length Outriggers
2 X 4 Exterior Walls 16" o.c.
2 X 6 Floor Joists 16" o.c.
Drywall Construction
Truss-type Rafters
Zone One Insulation
Vaulted Ceiling Throughout
Sprayed Acoustic Ceilings
5/8" Subfloor

EXTERIOR

Vinyl Siding
Shingle Roof
White Receiver Windows
Exterior Light at Each Exterior Door
House-type Front Door with Storm

INTERIOR

Full Length Drapes in Living Room
Mini Blinds Throughout
Brushed Nickel Door Knobs Throughout
Wrapped Molding
Wrapped Door Jambs
30" Bedroom Doors

BATH

Glamour Master Bath
48" Shower Stall Master Bath
Framed Mirror in all Baths
Double Lavs in Master Baths (Most Models)
Ceramic Toilets

KITCHEN

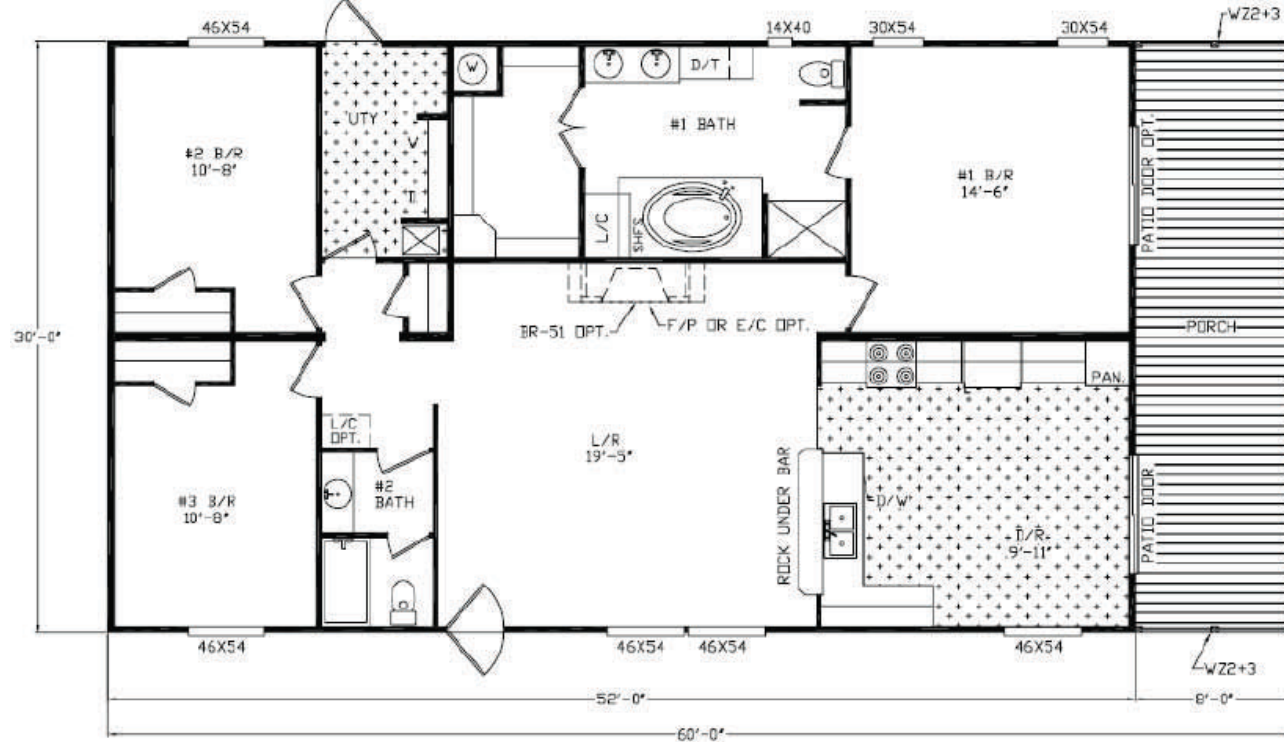
Deep Stainless Steel Double Bowl Sink
Decorative Glass (Most Models)
Center Shelves in all O/H Cabinets
Base Shelf in all Cabinets
White Lined Cabinets
Metal Roller Guides
Recessed Toe Kick
Pantry in Kitchen (Most Models)
Electric Range

42" Recessed Range Hood
Whirlpool Appliances
Raised Panel Cabinet Door
Recessed Hinges on Cabinet Doors
Brushed Nickel Cabinet Pulls
30" Overhead Cabinets

ELECTRICAL/PLUMBING

200 Amp Service
Smoke Detectors
100% Copper Wiring
GFI Protected Receptacles at Kitchen Sink
GFI Protected Exterior Receptacle
Exhaust Fan in all Baths
Electric Furnace
30 Gallon Water Heater

PVC Drain Lines
Pex Plumbing System



POPULAR OPTIONS

Dishwasher
Thermal Zone II or III
Ceiling Fan
20" Stainless Steel Refrigerator
Microwave Oven

Upgrade Carpet
Wainscot
Storm Windows
Linen Cabinet
Plywood Floors

Fireplace
Steel Front Door
Deluxe Range
Icemaker
Skylights

For more information, please contact us:



400 river birch drive
hackleburg, al 35564

tf 888 426 5622
tel 205 935 1997