



river birch
HOMES

model 3023

68 X 32 | 4 bedrooms | 2 bath | 1920 square feet

Quality, Value, and Service.

STANDARD FEATURES

CONSTRUCTION

- 12" Steel I-Beam Chassis
- Full Length Outriggers
- 2 x 4 Exterior Walls 16" o.c.
- 2 x 6 Floor Joist 16" o.c.
- Drywall Construction
- Truss Type Rafters
- Zone One Insulation
- Vaulted Ceiling Throughout
- Sprayed Acoustic Ceilings
- 5/8" Subfloor

INTERIOR

- Valances Throughout
- Mini Blinds Throughout
- Brushed Nickel Door Knobs
- Wrapped Molding
- Wrapped Door Jambs
- 30" Bedroom Doors

EXTERIOR

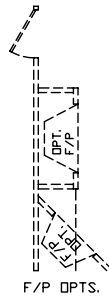
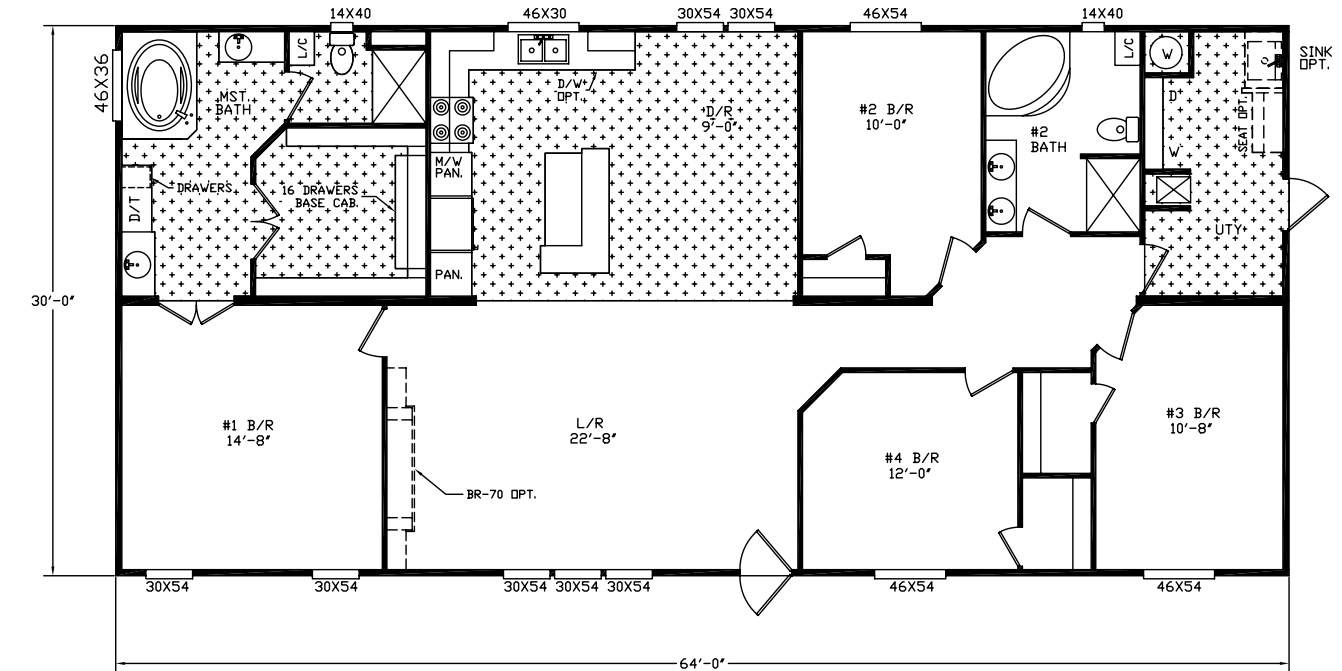
- Exterior Light at Each Ext. Door
- House-type Front Door with Storm

BATH

- Glamour Bath (Most Models)
- Dressing Table in Master Bath (Most Models)
- Framed Mirror in all Baths (Most Models)

KITCHEN

- Deep Stainless Steel Dbl Bowl Sink
- Decor. Molding on Kitchen Cabinets
- Center Shelves in all O/H Cabinets
- Base Shelf in all Cabinets
- White Lined Cabinets
- Metal Roller Guides
- Recessed Toe Kick
- 30" Overhead Cabinets



- Pantry in Kitchen (Most Models)
- Electric Range
- 42" Recessed Range Hood
- Whirlpool Appliances
- Raised Panel Cabinet Doors
- Recessed Hinges on Cabinet Doors
- Brushed Nickel Cabinet Pulls

- 100% Copper Wiring
- GFI Protected Receptacles in all Baths
- GFI Protected Receptacles at Kit Sink
- GFI Protected Exterior
- Exhaust Fan in all Baths
- Electric Furnace - A/C Ready
- 30 Gallon Water Heater
- PVC Drain Lines
- Pex Plumbing System

ELECTRICAL/PLUMBING

- 200 Amp Service
- Smoke Detectors

For more information, please contact us:



400 river birch drive
hackleburg, al 35564

tf 888 426 5622
tel 205 935 1997

POPULAR OPTIONS

- Thermal Zone II or III
- Ceiling Fan
- Wainscot in Living Room
- Microwave Oven

- Upgrade Carpet
- Fireplace
- Dishwasher
- Storm Windows

- Steel Front Doors
- Cut-Off Valves
- Plywood Floors
- Backsplash in Kitchen