



**river birch**  
HOMES

**model 4043**

56 x 28 | 3 bedrooms | 2 baths | 1352 square feet

**Quality, Value, and Service.**

**STANDARD FEATURES**

**CONSTRUCTION**

- Detachable Hitches
- Steel I-Beam Chassis
- Full Length Outriggers
- 2 X 4 Exterior Walls 16" o.c.
- 2 X 6 Floor Joists 16" o.c.
- Drywall Construction
- Truss-type Rafters
- Zone One Insulation
- Vaulted Ceiling Throughout
- Sprayed Acoustic Ceilings
- 5/8" Subfloor

**EXTERIOR**

- Vinyl Siding
- Shingle Roof
- White Receiver Windows
- Exterior Light at Each Exterior Door
- House-type Front Door with Storm

**INTERIOR**

- Full Length Drapes in Living Room
- Mini Blinds Throughout
- Brushed Nickel Door Knobs Throughout
- Wrapped Molding
- Wrapped Door Jambs
- 30" Bedroom Doors

**BATH**

- Glamour Master Bath
- 48" Shower Stall Master Bath
- Framed Mirror in all Baths
- Double Lavs in Master Baths (Most Models)
- Ceramic Toilets

**KITCHEN**

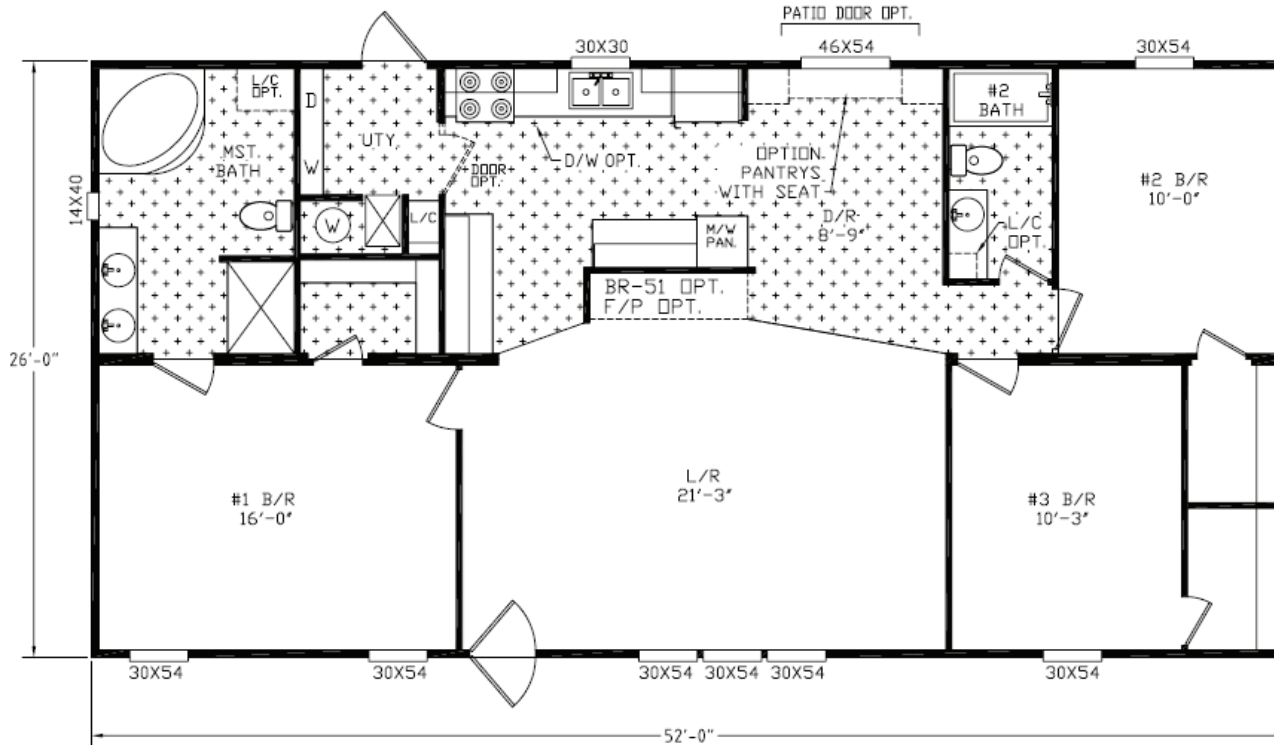
- Deep Stainless Steel Double Bowl Sink
- Decorative Glass (Most Models)
- Center Shelves in all O/H Cabinets
- Base Shelf in all Cabinets
- White Lined Cabinets
- Metal Roller Guides
- Recessed Toe Kick
- Pantry in Kitchen (Most Models)
- Electric Range

- 42" Recessed Range Hood
- Whirlpool Appliances
- Raised Panel Cabinet Door
- Recessed Hinges on Cabinet Doors
- Brushed Nickel Cabinet Pulls
- 30" Overhead Cabinets

**ELECTRICAL/PLUMBING**

- 200 Amp Service
- Smoke Detectors
- 100% Copper Wiring
- GFI Protected Receptacles at Kitchen Sink
- GFI Protected Exterior Receptacle
- Exhaust Fan in all Baths
- Electric Furnace
- 30 Gallon Water Heater

- PVC Drain Lines
- Pex Plumbing System



**POPULAR OPTIONS**

- Dishwasher
- Thermal Zone II or III
- Ceiling Fan
- 20' Stainless Steel Refrigerator
- Microwave Oven

- Upgrade Carpet
- Wainscot
- Storm Windows
- Linen Cabinet
- Plywood Floors

- Fireplace
- Steel Front Door
- Deluxe Range
- Icemaker
- Skylights

For more information, please contact us:



400 river birch drive  
hackleburg, al 35564

tf 888 426 5622  
tel 205 935 1997

River Birch Homes, Inc. reserves the right to change colors, prices, specifications, models, dimensions and materials without notice. Rendering and diagrams are meant to be representative and, in keeping with River Birch's policy of updating and improvement, may vary from the actual home. All dimensions are nominal and approximated. Square footage is measured from exterior wall to exterior wall, and is an approximate figure. Length and width indicated on floorplan is floor size. Size indicated at model number is transportation size.